

2023 Catalog

Series 2

Compact Tractors

34.2 - 48.3 ps



For distribution and sales in the South Korean market only

Series 2 Compact Tractors

The Series 2 tractors are built to take on more demanding tasks while maintaining the smallest frame possible, tackling routine jobs, and the occasional tougher challenges, in and around your

property. Use the front loader to transport material around your property and use the rear hitch for tow-behind implements to complete tasks like cleaning efficiently.



T36

Engine power 34.2 ps - **Lift capacity** 1197 kg



K42

Engine power 43 ps - **Lift capacity** 1500 kg



K48

Engine power 48 ps - **Lift capacity** 1500 kg



K48C

Engine power 48 ps - **Lift capacity** 1500 kg



K48L

Engine power 48 ps - **Lift capacity** 1500 kg



T48

Engine power 48.3 ps - **Lift capacity** 1220 kg

Built to tackle a variety of tasks on your land

The Series 2 tractors have enhanced lift capacities, maximizing work capabilities while maintaining one of the most compact frames. Functional design and precision engineering come together to bring you tractors that promote productivity, from the Tier 4 certified engine and third-function ready rear hitch, to the ergonomically configured operator platform.

Use a Series 2 tractor to maintain a healthy lawn, build a home garden, take care of yard work with ease, or create space for a lively home farm. Front-end loader, mid-mount mower and rear hitch linkages enable you to attach a variety of implements and do more per cycle.

Most popular applications



Landscaping



Arable Farming



Cleaning



Livestock & Poultry



All the right features to get the job done



High torque diesel engine

Equipped with engines from renowned manufacturers, the Series 2 tractors offer more torque with less revs compared to competitors in its class. It is engineered to be quiet and minimize emissions for comfortable operations.



High capacity fuel tank

The high capacity fuel tank allows the tractor to operate for longer periods of time without having to refuel and increases engine efficiency.



Touch-to-open hood for convenient maintenance

The tractor hood can be opened in one motion, providing easy access to the engine and other systems for daily checks, routine service and maintenance.



3-point hitch with powerful lift capacity

The 3-point linkage on the rear has an impressive lift capacity that reaches the end joints. The rear PTO control can be used to adjust rpm based on the task, increasing it for more intensive applications like slashing and digging.



PTO lever

Even while the tractor is in motion, operators can use a dedicated PTO lever to speed up or slow down implement rpm and raise or lower with a dial.



Driver oriented controls

The ergonomically designed cockpit increases the operator's command of the tractor.

T36

Powerful and compact



Key specifications:

Engine power
34.2 ps -

Engine manufacturer
Yanmar 3TNV88C (KKTF)

Lift capacity
1197 kg

PTO power
26.4 ps -



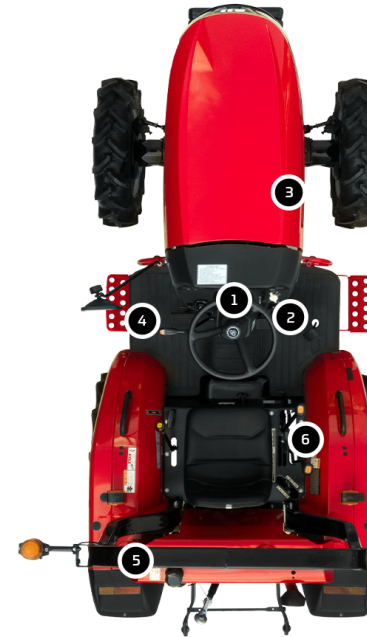
1. Digital Instrument Panel



2. PTO on/off switch



3. Dual filter air cleaner



4. Shuttle lever



5. ROPS



6. Main shift lever

K42

Compact and agile



Key specifications:

Engine power
43 ps -

Engine manufacturer
TYM A2000

Lift capacity
1500 kg

PTO power
37 ps -



1. 6 standard ballast weights



2. Electronic instrumental panel



3. PTO safety switch



4. PTO transmission lever



5. External hydraulic control lever



6. Forward/reverse shuttle lever

K48

Compact and agile



Key specifications:

Engine power
48 ps -

Engine manufacturer
TYM A2300

Lift capacity
1500 kg

PTO power
41 ps -



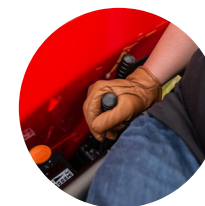
1. Tilt steering wheel



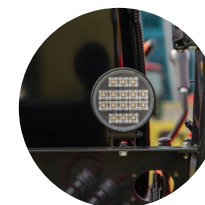
2. Electronic instrumental panel



3. PTO switch



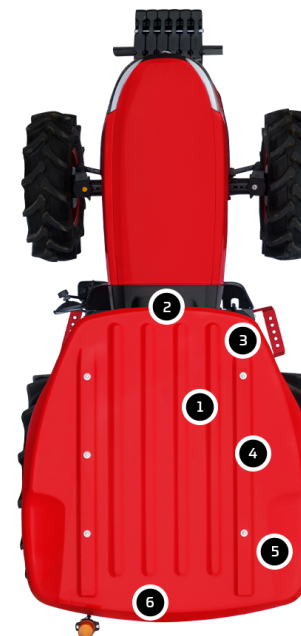
4. External hydraulic control lever



5. Rear LED work light



6. Rear external hydraulic valve



K48C

Power and comfort



Key specifications:

Engine power
48 ps -

Engine manufacturer
TYM A2300

Lift capacity
1500 kg

PTO power
41 ps -



1. 3-speed PTO



2. Loader joystick



3. Electronic
instrumental panel



4. PTO switch



5. Tilt steering
wheel



6. Forward/reverse
shuttle lever



K48L

Specially designed for greenhouses



Key specifications:

Engine power
48 ps -

Engine manufacturer
TYM A2300

Lift capacity
1500 kg

PTO power
41 ps -



1. Tilt steering wheel



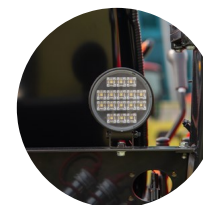
2. Electronic instrumental panel



3. PTO switch



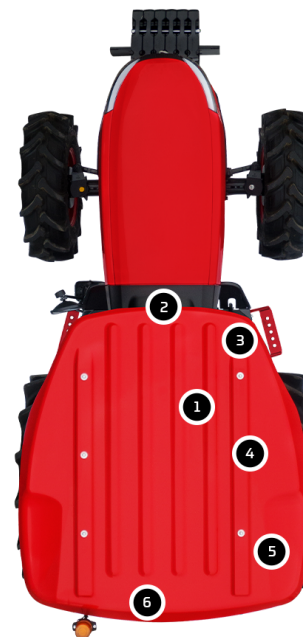
4. External hydraulic control lever



5. Rear LED work light



6. Rear external hydraulic valve



T48

Among Korea's most popular



Key specifications:

Engine power
48.3 ps -

Engine manufacturer
TYM A2300

Lift capacity
1220 kg

PTO power
35 ps -



1. Throttle lever



2. PTO shift lever



3. Functional switch



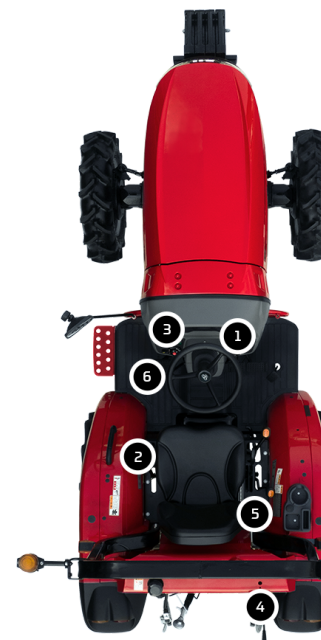
4. Rear external position lever



5. External hydraulics control lever



6. Shuttle lever



Specification Guide

MODEL	T36	K42	K48	K48C
ENGINE				
Engine manufacturer	Yanmar 3TNV88C (KKTF)	TYM A2000	TYM A2300	TYM A2300
Type	Natural Aspiration	Turbocharger	Natural Aspiration	Natural Aspiration
Engine power	34.2 ps 25.5 kW	43 ps 31.5 kW	48 ps 35.5 kW	48 ps 35.5 kW
PTO power	26.4 ps 19.7 kW	37 ps 27 kW	41 ps 30 kW	41 ps 30 kW
Rated engine speed	2800 rpm	2600 rpm	2600 rpm	2600 rpm
No. of cylinders	3	4	4	4
Displacement	1642 cc 100.2 cu. in.	2084 cc 127.17 cu. in.	2287 cc 139.56 cu. in.	2287 cc 139.56 cu. in.
Air cleaner	Dual Dry	Dry Element	Dry Element	Dry Element
Alternator	12V, 70A	12V-50A	12V-50A	12V-70A
Fuel system	DI	Indirect Injection	Indirect Injection	Indirect Injection
POWERTRAIN				
Transmission type	Mechanical	Sync/Shuttle	Syncho	Syncho
No. of speeds	F12 x R12	F6 x R12	F12 x R12	F12 x R12
Max. traveling speed	24.8 km/h 15.41 mph	23.9 km/h 14.85 mph	25.2 km/h 15.65 mph	25.2 km/h 15.65 mph
Brakes	Wet Disc	Wet Disc	Wet Disc	Wet Disc
Steering	Hydrostatic	Hydrostatic	Hydrostatic	Hydrostatic
Clutch	Dry Disc	Dry Disc	Dry disk	Dry Disc
CAPACITIES				
Fuel tank	33 L 8.71 gal	27 L 7.13 gal	27 L 7.13 gal	50 L 13.20 gal
Coolant	7.0 L 7.4 qt	4 L 4.22 qt	4.5 L 4.75 qt	5 L 5.28 qt
Crankcase	5.7 L 6.0 qt	4.5 L 4.75 qt	4.5 L 4.75 qt	4.5 L 4.75 qt
Transmission/Hydraulics system	32 L 8.5 gal	34 L 8.98 gal	34 L 8.98 gal	34 L 8.98 gal
Front axle	8.2 L 8.7 qt	6.4 L 6.76 qt	6.4 L 6.76 qt	6.4 L 6.76 qt
PTO				
PTO type	Independent	Independent	Independent	Independent
PTO control	Electric/Hydro	Electric/Hydro	Electric/Hydro	Electric/Hydro
PTO rear	540/750/1000	540/750	540/750/1000	540/750/1000
HYDRAULIC SYSTEM				
Pump type	Dual Gear Pump	Gear Pump	Gear Pump	Gear Pump
Implement flow	23.09 lpm 6.1 gpm	35.1 lpm 9.27 gpm	43.2 lpm 11.41 gpm	43.2 lpm 11.41 gpm
Steering flow	16.65 lpm 4.4 gpm	18.9 lpm 4.99 gpm	18.9 lpm 4.99 gpm	18.9 lpm 4.99 gpm
Total flow	39.7 lpm 10.5 gpm	54 lpm 14.26 gpm	62.1 lpm 16.40 gpm	62.1 lpm 16.40 gpm
Category, 3-point hitch	Cat1	Cat1	Cat1	Cat1
Hitch lift capacity	1197 kg	1500 kg	1500 kg	1500 kg
Hitch lift capacity at 24 inches behind link ends	706 kg 1558 lb	1100 kg 2425.08 lb	1100 kg 2425.08 lb	1100 kg 2425.08 lb
Lift control type	Position	Position, Draft	Position, Draft	Position, Draft
No. of standard remote valves	4 port	4	4	4
DIMENSIONS & WEIGHTS				
Overall length with 3-point hitch	3010 mm 118.5 in.	3090 mm 121.65 in.	3160 mm 124.40 in.	3325 mm 130.90 in.
Overall width	1410 mm 55.51 in.	1415 mm 55.70 in.	1535 mm 60.43 in.	1550 mm 61.02 in.
Wheelbase	1640 mm 64.56 in.	1670 mm 65.74 in.	1720 mm 67.71 in.	1750 mm 68.89 in.
Min. ground clearance	360 mm 14.17 in.	365 mm 14.37 in.	395 mm 15.55 in.	395 mm 15.55 in.
Min. turn radius with brakes	2400 mm 94.4 in.	2290 mm 90.15 in.	2810 mm 110.62 in.	2550 mm 100.39 in.
Min. turn radius without brakes	2950 mm 116 in.	2680 mm 105.51 in.	3120 mm 122.83 in.	3080 mm 121.25 in.
Height to top of ROPS	2590 mm 101.96 in.	2360 mm 92.91 in.	2450 mm 96.45 in.	2410 mm 94.88 in.
Track width	F: 1137 mm / R: 1040 mm	F: 1220 mm / R: 1125 mm	F: 1270 mm / R: 1195 mm	F: 1270 mm / R: 1210 mm
Weight with ROPS	1475 kg 58.07 lb	1535 kg 3384.09 lb	1580 kg 3483.30 lb	1810 kg 3990.36 lb
STANDARD TIRES				
Agricultural - Front	8.0 - 16	8 - 16	8 - 18	9.5 - 16
Agricultural - Rear	12.4 - 24	12.4 - 24	11.2 - 28	13.6 - 24

Specification Guide

MODEL	K48L	T48
ENGINE		
Engine manufacturer	TYM A2300	TYM A2300
Type	Natural Aspiration	Natural Aspiration
Engine power	48 ps 35.5 kW	48.3 ps 35.5 kW
PTO power	41 ps 30 kW	35 ps 26 kW
Rated engine speed	2600 rpm	2600 rpm
No. of cylinders	4	4
Displacement	2287 cc 139.56 cu. in.	2286 cc 139.5 cu. in.
Air cleaner	Dry Element	Dual Dry
Alternator	12V-50A	12V, 70A
Fuel system	Indirect Injection	IDI
POWERTRAIN		
Transmission type	Synchro	Mechanical
No. of speeds	F12 x R12	F12 x R12
Max. traveling speed	25.2 km/h 15.65 mph	24.0 km/h 14.9 mph
Brakes	Wet Disc	Wet Disc
Steering	Hydrostatic	Hydrostatic
Clutch	Dry disk	Dry disk
CAPACITIES		
Fuel tank	27 L 7.13 gal	34 L 9.0 gal
Coolant	4.5 L 4.75 qt	6.5 L 6.9 qt
Crankcase	4.5 L 4.75 qt	6.4 L 6.8 qt
Transmission/Hydraulics system	34 L 8.98 gal	32 L 8.5 gal
Front axle	6.4 L 6.76 qt	8.21 L 2.17 qt
PTO		
PTO type	Independent	Independent
PTO control	Electric/Hydro	Electric/Hydro
PTO rear	540/750/1000	18/25
HYDRAULIC SYSTEM		
Pump type	Gear Pump	Dual Gear Pump
Implement flow	43.2 lpm 11.41 gpm	29 lpm 7.66 gpm
Steering flow	18.9 lpm 4.99 gpm	16.088 lpm 4.25 gpm
Total flow	62.1 lpm 16.40 gpm	45.08 lpm 11.91 gpm
Category, 3-point hitch	Cat1	Cat1
Hitch lift capacity	1500 kg	1220 kg
Hitch lift capacity at 24 inches behind link ends	1100 kg 2425.08 lb	673 kg 1764 lb
Lift control type	Position, Draft	Position
No. of standard remote valves	4	4
DIMENSIONS & WEIGHTS		
Overall length with 3-point hitch	3160 mm 124.40 in.	3220 mm 126.77 in.
Overall width	1535 mm 60.43 in.	1330 mm 54.5 in.
Wheelbase	1720 mm 67.71 in.	2155 mm 84.84 in.
Min. ground clearance	395 mm 15.55 in.	345 mm 13.58 in.
Min. turn radius with brakes	2810 mm 110.62 in.	2710 mm 106.7 in.
Min. turn radius without brakes	3120 mm 122.83 in.	2985 mm 117.5 in.
Height to top of ROPS	2450 mm 96.45 in.	2560 mm 100.78 in.
Track width	F: 1270 mm / R: 1195 mm	F: 1140 mm / R: 1040 mm
Weight with ROPS	1580 kg 3483.30 lb	1520 kg 3351.02 lb
STANDARD TIRES		
Agricultural - Front	7 - 16	7 - 16
Agricultural - Rear	11.2 - 24	11.2 - 24



Designed for your world

TYM creates tractors that bring together alluring form, advanced function and accessible value. Through Korean expertise in design, engineering and manufacturing, the company helps owners overcome every obstacle as they shape the world around them.

Headquartered in Korea with distribution across North America, Europe, and Asia, and assembly operations in the USA, TYM has been empowering customers for over 70 years.

www.tym.world