

2024 Catalog

Series 5

Utility Tractors

111 hp



For distribution and sales in North American territories

Series 5 Utility Tractors

While combining greater power output and maximized lift capabilities, the Series 5 TYM tractors also balance high maneuverability while increasing ground coverage with each pass.

Faster traveling speeds make these tractors ideal for medium-to-heavy-duty applications that demand productivity.



T1104

Engine power 111 hp - **Lift capacity** 6860 lb



T115

Engine power 111 hp - **Lift capacity** 7295 lb

Upgraded capabilities and enhanced productivity to tackle your challenges

The Series 5 tractors include premium TYM utility models, designed with optimum dimensions for maximum maneuverability. Additionally, these tractors that have a less than 10% drop-off in power from the front to back, powered by a high efficiency, liquid-cooled engine certified for Tier 4 standards. Combined with a large volume fuel tank, this tractor is ready to take on any time-intensive, medium-to-heavy duty applications.

To enable further productivity during running, the tractor is fitted with a premium operator cabin, complete with full AC and heating and an intuitive console comprising all major controls.

Most popular applications



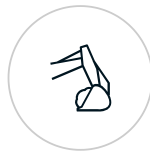
Livestock & Poultry



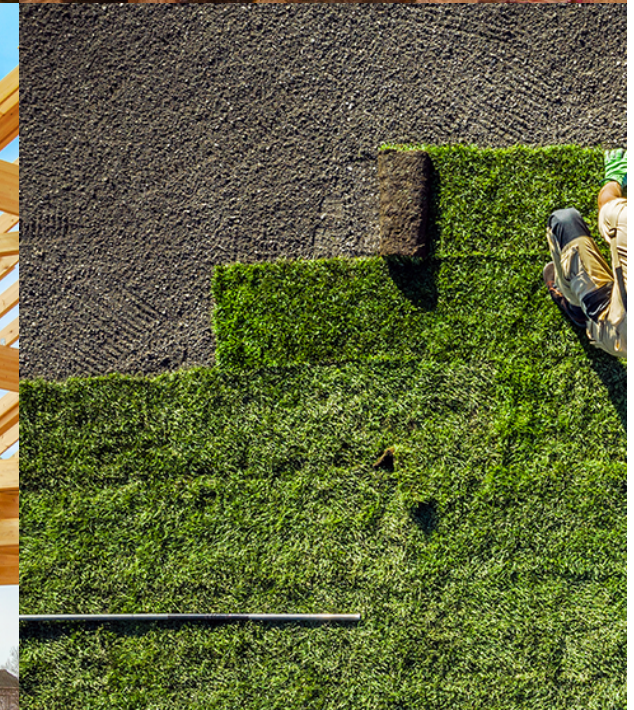
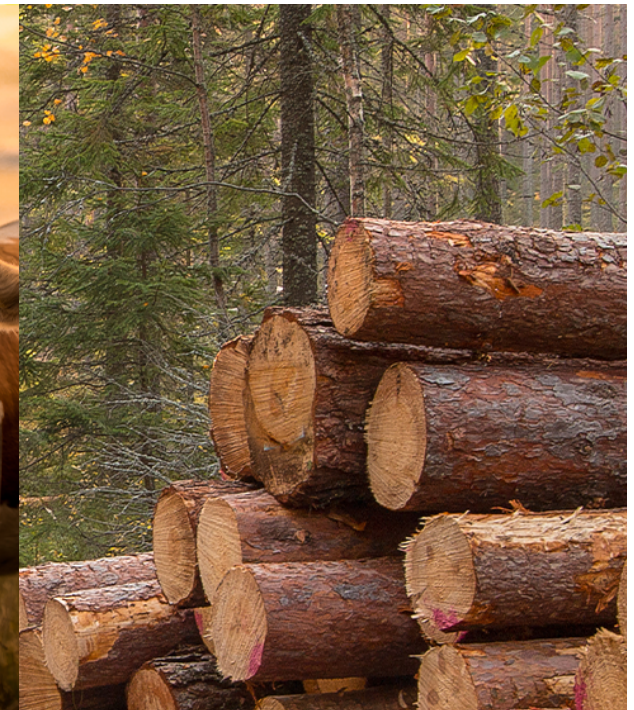
Land Clearing & Forestry



Material Handling



Landscaping



All the right features to get the job done



4-cylinder, Tier 4 Doosan diesel engine

With high power output and low-end torque, this engine maintains the highest level of performance with enhanced efficiency. The advanced fuel injection system and turbo charger, the engine drives tractor productivity in challenging conditions and applications.



Interior detailing to promote operator comfort

Operators can activate core functions easily from the main console, including the PTO on/off switch. Digital displays provide alerts and diagnostic information instantly and at a glance. In addition to a spacious and ergonomic seat, the operator platform has a flat floor with a rubber mat to support comfort during entry, exit and while driving.



Durable, shock absorbing axle configuration

The heavy duty 4WD front axle allows the tractor to lift heavy loads and tow large implements while absorbing shock and maintaining tractor stability. Powerful hydraulics support the power steering system, which benefits from a dual action mechanism using a hydraulic cylinder and tandem type hydraulic pump.



Hydraulic implement controls

Hydraulic implement controls allow easy removal of the attachments from the outside of the cabin.



3-point hitch with powerful lift capacity

The 3-point linkage on the rear has an impressive lift capacity that reaches the end ball joint. The rear PTO control can be used to adjust rpm based on the task, increasing it for more intensive applications like slashing and digging.



6-port rear hydraulic valve for add-on functions

The 6-port valve on the rear of the tractor allows implements of different functions to be controlled easily. This is particularly beneficial for applications like row crop farming and material handling, as trailers are fit with an optional hydraulic brake.

T1104

The in-series, top-of-the-line model



1. Front wipers



2. 3rd function



3. External hitch control buttons



4. Main shift D-clutch



5. 4WD



6. Extendable lower link ends

Key specifications:

Engine power
111 hp -

Engine manufacturer
Doosan Infracore D34P

Lift capacity
6860 lb

PTO power
98.8 hp -

T115

The in-series, top-of-the-line model



1. Refined hood design



2. LED Dual side mirrors



3. Digital instrument panel



4. Battery shut-off switch



5. Electronic Floor-mount pedal



6. Side & rear LED work lights

Key specifications:

Engine power
111 hp -

Engine manufacturer
Deutz TCD 3.6L4-C5VT83E

Lift capacity
7295 lb

PTO power
109 hp -

Specification Guide

MODEL	T1104	T115
ENGINE		
Engine manufacturer	Doosan Infracore D34P	Deutz TCD 3.6L4-C5VT83E
Type	Turbo	Turbo charger
Engine power	111 hp 82 kW	111 hp 83 kW
PTO power	98.8 hp 73.7 kW	109 hp 80 kW
Rated engine speed	2300 rpm	2200 rpm
No. of cylinders	4	4
Displacement	3409 cc 208 cu. in.	3621.5 cc 221 cu. in.
Air cleaner	Dual Dry	Dual Dry
Alternator	12V, 110A	12V, 120A
Fuel system	CRDI	CRDI
POWERTRAIN		
Transmission type	Power Shuttle & Hi/Lo shift	Power Shuttle / Hi-Lo shift
No. of speeds	F32xR32	F32 x R32 w/Creep
Max. traveling speed	39.6 kmph 24.6 mph	37.2 km/h 23.1 mph
Brakes	Wet Disc	Wet, Multi-disc
Steering	Hydrostatic	Hydrostatic
Clutch	Wet Multi Plate	Wet, multi-plate
CAPACITIES		
Fuel tank	110 L (DEF 20 L) 29.1 gal (DEF 5.3 U.S. gal.)	120 L 31.7 gal
Coolant	16.5 L 4.4 qt	18.1 L 19.1 qt
Crankcase	15.9 L 4.2 qt	8 L 2.1 gal
Transmission/Hydraulics system	75 L 19.8 gal	90.1 L 23.8 gal
Front axle	17.4 L 4.6 qt	17.4 L 4.6 gal
PTO		
PTO type	Independent	Independent
PTO control	Electric/Hydro	Electro-hydraulic
PTO rear	540/750/1000 rpm	540/540E/1000 rpm (Reversible shaft)
HYDRAULIC SYSTEM		
Pump type	Dual Gear Pump	Dual Gear Pump
Implement flow	53.75 l/min 14.2 gpm	54.1 lpm 14.3 gpm
Steering flow	26.88 l/min 7.1 gpm	26.9 lpm 7.1 gpm
Total flow	80.69 l/min 21.3 gpm	81 lpm 21.4 gpm
Category, 3-point hitch	II	II
Hitch lift capacity	3112 kg	3309 kg
Hitch lift capacity at 24 inches behind link ends	2490 lg 5490 lb	2725 kg 6007.6 lb
Lift control type	Position/Draft/Elec	Position/Draft
No. of standard remote valves	3	6
DIMENSIONS & WEIGHTS		
Overall length with 3-point hitch	4250 mm 167.32 in.	4450.1 mm 175.2 in.
Overall width	2185 mm 86 in.	2270.8 mm 89.4 in.
Wheelbase	2300 mm 90.55 in.	2380 mm 93.7 in.
Height to top of ROPS	2718 mm 107 in.	-
Min. ground clearance	465 mm 18.3 in.	424.2 mm 16.7 in.
Min. turn radius with brakes	3650 mm 143.7 in.	3411.2 mm 134.3 in.
Min. turn radius without brakes	4120 mm 162 in.	4089.4 mm 161 in.
Weight with cab	4050 kg 8929 lb	4055.1 kg 8940 lb
STANDARD TIRES		
R1 Agricultural - Front	FSTR 380/85R24 TL (14.9R24)	-
R1 Agricultural - Rear	FSTR 460/85R34 TL (18.4R34)	-



Designed for your world

TYM creates tractors that bring together alluring form, advanced function and accessible value. Through Korean expertise in design, engineering and manufacturing, the company helps owners overcome every obstacle as they shape the world around them.

Headquartered in Korea with distribution across North America, Europe, and Asia, and assembly operations in the USA, TYM has been empowering customers for over 70 years.

www.tym.world