

2023 Catalog

# Series 5

Utility Tractors

111 hp



For distribution and sales in North American territories

# Series 5 Utility Tractors

While combining greater power output and maximized lift capabilities, the Series 5 TYM tractors also balance high maneuverability while increasing ground coverage with each pass.

Faster traveling speeds make these tractors ideal for medium-to-heavy-duty applications that demand productivity.



## T1104

Engine power	Lift capacity
111 hp -	3112 kg

# Upgraded capabilities and enhanced productivity to tackle your challenges

The Series 5 tractors include premium TYM utility models, designed with optimum dimensions for maximum maneuverability. Additionally, these tractors that have a less than 10% drop-off in power from the front to back, powered by a high efficiency, liquid-cooled engine certified for Tier 4 standards. Combined with a large volume fuel tank, this tractor is ready to take on any time-intensive, medium-to-heavy duty applications.

To enable further productivity during running, the tractor is fitted with a premium operator cabin, complete with full AC and heating and an intuitive console comprising all major controls.

## Most popular applications



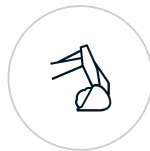
Livestock & Poultry



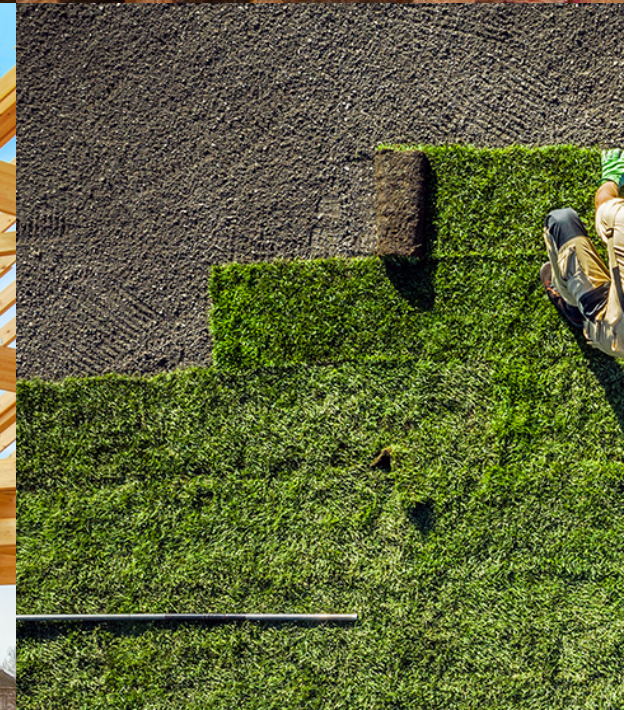
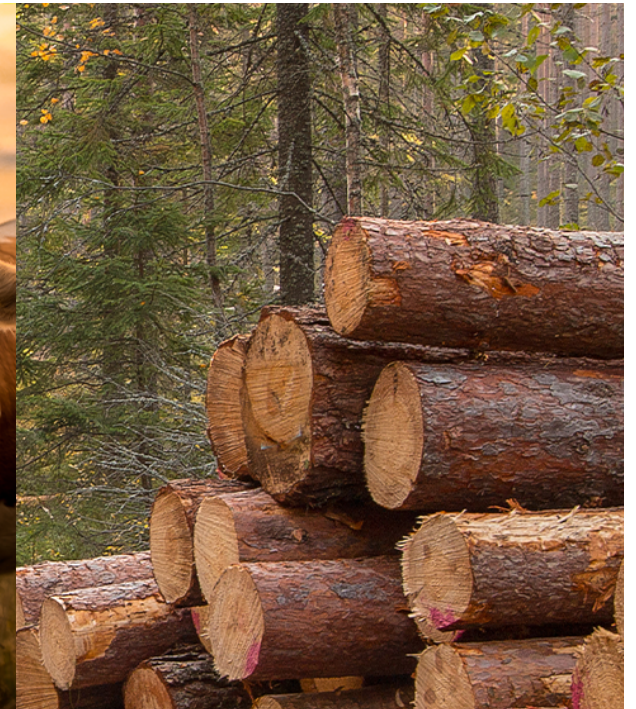
Land Clearing & Forestry



Material Handling



Landscaping



# All the right features to get the job done



## 4-cylinder, Tier 4 Doosan diesel engine

With high power output and low-end torque, this engine maintains the highest level of performance with enhanced efficiency. The advanced fuel injection system and turbo charger, the engine drives tractor productivity in challenging conditions and applications.



## Interior detailing to promote operator comfort

Operators can activate core functions easily from the main console, including the PTO on/off switch. Digital displays provide alerts and diagnostic information instantly and at a glance. In addition to a spacious and ergonomic seat, the operator platform has a flat floor with a rubber mat to support comfort during entry, exit and while driving.



## Durable, shock absorbing axle configuration

The heavy duty 4WD front axle allows the tractor to lift heavy loads and tow large implements while absorbing shock and maintaining tractor stability. Powerful hydraulics support the power steering system, which benefits from a dual action mechanism using a hydraulic cylinder and tandem type hydraulic pump.



## Hydraulic implement controls

Hydraulic implement controls allow easy removal of the attachments from the outside of the cabin.



## 3-point hitch with powerful lift capacity

The 3-point linkage on the rear has an impressive lift capacity that reaches the end ball joint. The rear PTO control can be used to adjust rpm based on the task, increasing it for more intensive applications like slashing and digging.



## 6-port rear hydraulic valve for add-on functions

The 6-port valve on the rear of the tractor allows implements of different functions to be controlled easily. This is particularly beneficial for applications like row crop farming and material handling, as trailers are fit with an optional hydraulic brake.

# T1104

The in-series, top-of-the-line model



1. Front wipers



2. 3rd function



3. External hitch control buttons



4. Main shift D-clutch



5. 4WD



6. Extendable lower link ends



## Key specifications:

Engine power  
**111 hp -**

Engine manufacturer  
**Doosan Infracore D34P**

Lift capacity  
**3112 kg**

PTO power  
**98.8 hp -**

# Specification Guide

MODEL	T1104
<b>ENGINE</b>	
Engine manufacturer	Doosan Infracore D34P
Type	Turbo
Engine power	111 hp   82 kW
PTO power	98.8 hp   73.7 kW
Rated engine speed	2300 rpm
No. of cylinders	4
Displacement	3409 cc   208 cu. in.
Air cleaner	Dual Dry
Alternator	12V, 110A
Fuel system	CRDI
<b>POWERTRAIN</b>	
Transmission type	Power Shuttle & Hi/Lo shift
No. of speeds	F32xR32
Max. traveling speed	39.6 kmph   24.6 mph
Brakes	Wet Disc
Steering	Hydrostatic
Clutch	Wet Multi Plate
<b>CAPACITIES</b>	
Fuel tank	110 L (DEF 20 L)   29.1 gal (DEF 5.3 U.S. gal.)
Coolant	16.5 L   4.4 qt
Crankcase	15.9 L   4.2 qt
Transmission/Hydraulics system	75 L   19.8 gal
Front axle	17.4 L   4.6 qt
<b>PTO</b>	
PTO type	Independent
PTO control	Electric/Hydro
PTO rear	540/750/1000 rpm
<b>HYDRAULIC SYSTEM</b>	
Pump type	Dual Gear Pump
Implement flow	53.75 l/min   14.2 gpm
Steering flow	26.88 l/min   7.1 gpm
Total flow	80.69 l/min   21.3 gpm
Category, 3-point hitch	II
Hitch lift capacity	3112 kg
Hitch lift capacity at 24 inches behind link ends	2490 lg   5490 lb
Lift control type	Position/Draft/Elec
No. of standard remote valves	3
<b>DIMENSIONS &amp; WEIGHTS</b>	
Overall length with 3-point hitch	4250 mm   167.32 in.
Overall width	2185 mm   86 in.
Wheelbase	2300 mm   90.55 in.
Height to top of ROPS	2718 mm   107 in.
Min. ground clearance	465 mm   18.3 in.
Min. turn radius with brakes	3650 mm   143.7 in.
Min. turn radius without brakes	4120 mm   162 in.
Weight with cab	4050 kg   8929 lb
<b>STANDARD TIRES</b>	
R1 Agricultural - Front	FSTR 380/85R24 TL (14.9R24)
R1 Agricultural - Rear	FSTR 460/85R34 TL (18.4R34)



# Designed for your world

TYM creates tractors that bring together alluring form, advanced function and accessible value. Through Korean expertise in design, engineering and manufacturing, the company helps owners overcome every obstacle as they shape the world around them.

Headquartered in Korea with distribution across North America, Europe, and Asia, and assembly operations in the USA, TYM has been empowering customers for over 70 years.

[www.tym.world](http://www.tym.world)