

FIG 001

TX47

BUCKET

P1

Year / Month

2019 / 04

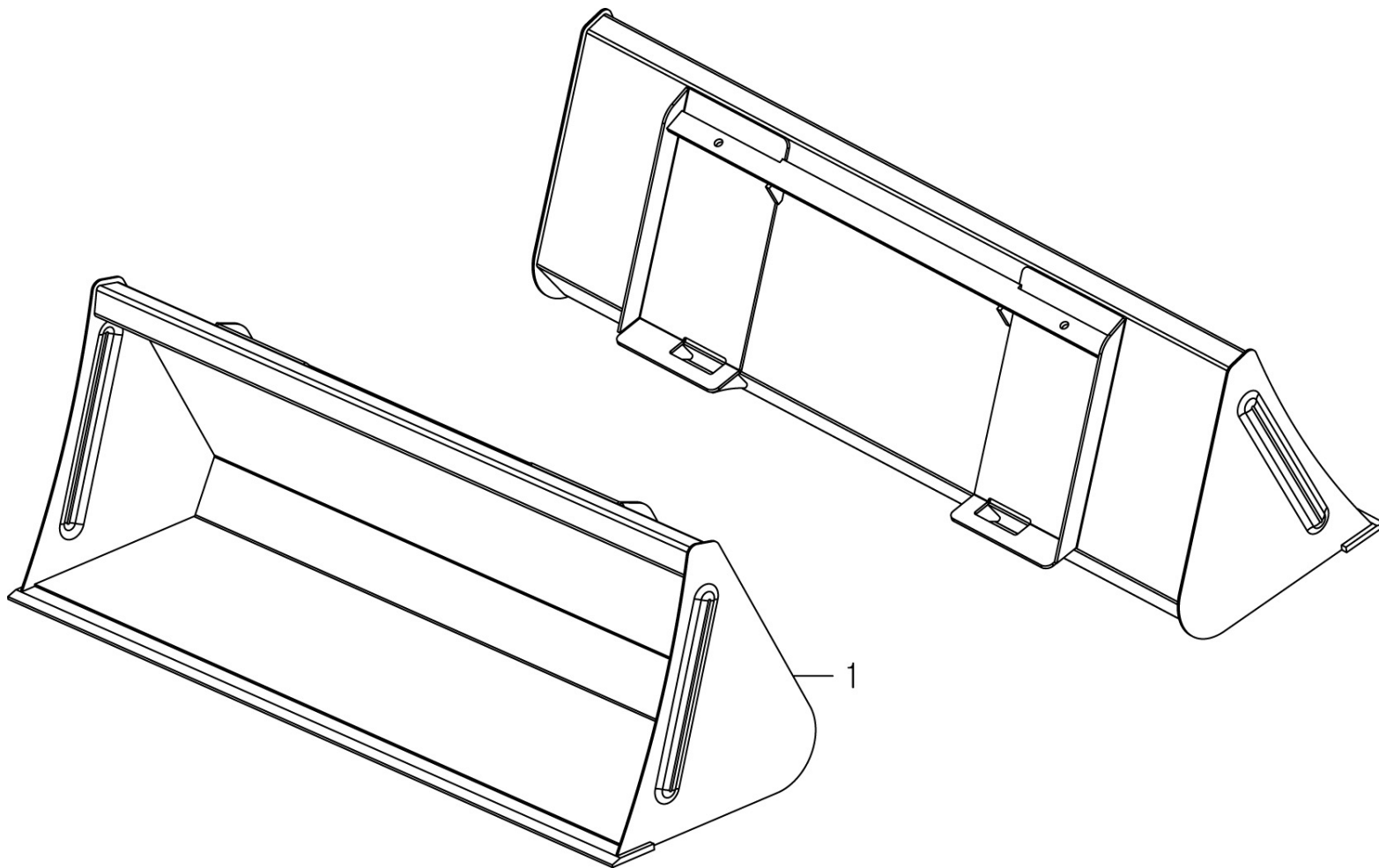
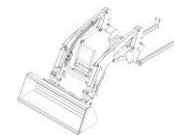


FIG 002

TX47

QUICK ATTACHMENT ASS'Y

P1

Year / Month

2019 / 04

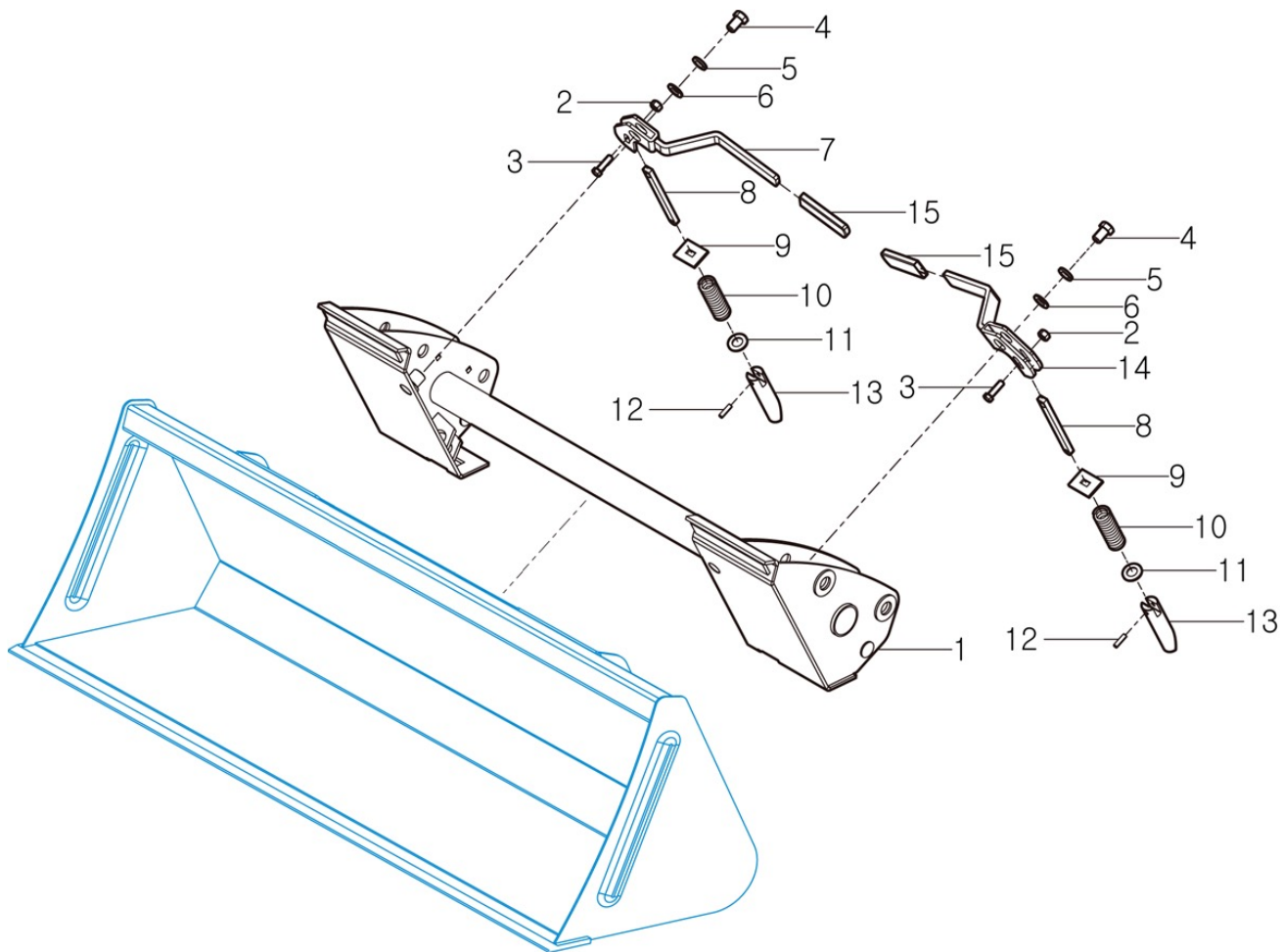


FIG 003

TX47

MOUNTING FRAME ASS'Y

P1

Year / Month

2019 / 04

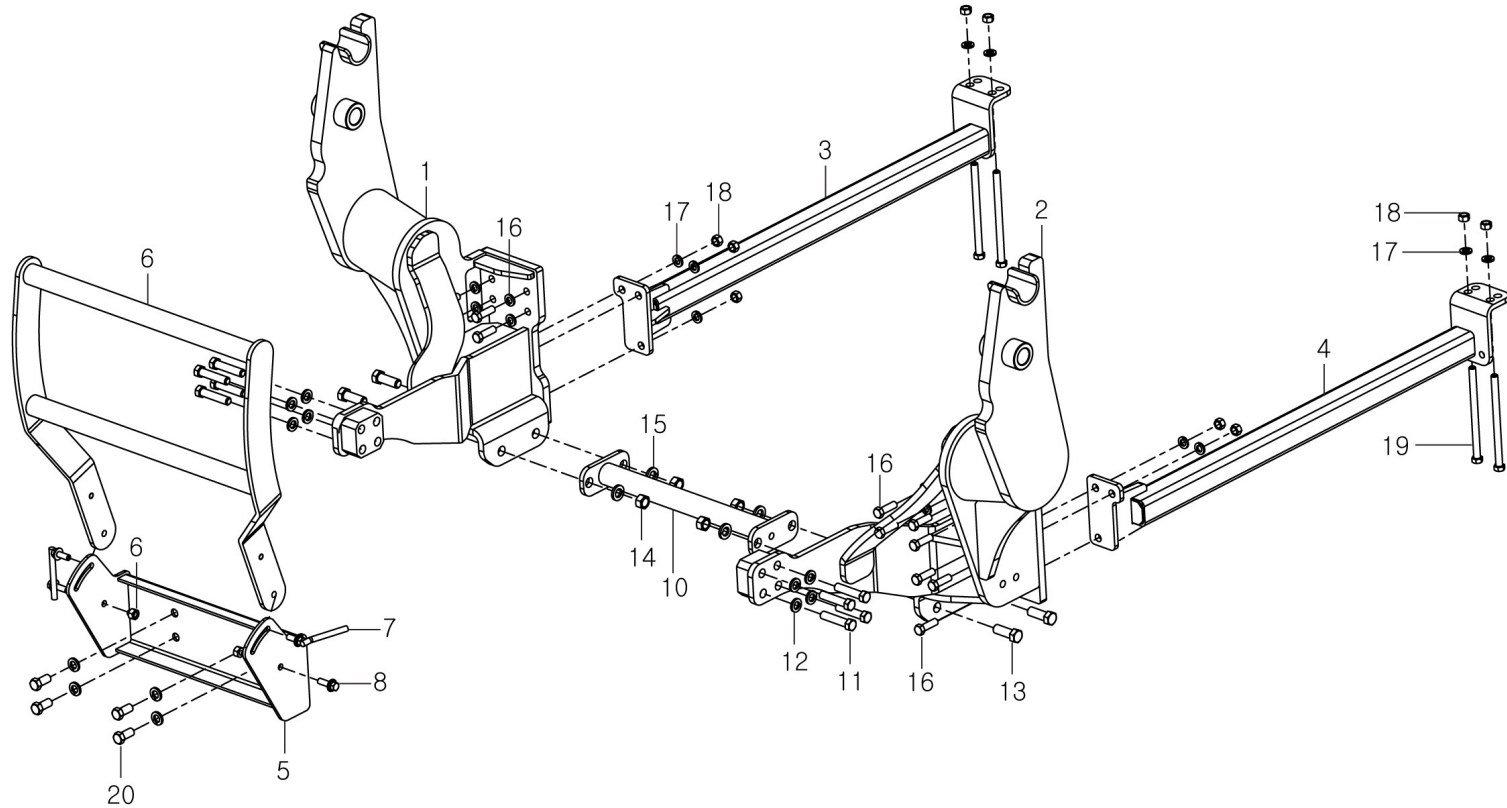


FIG 004

TX47

BOOM ASS'Y

P1

Year / Month

2019 / 04

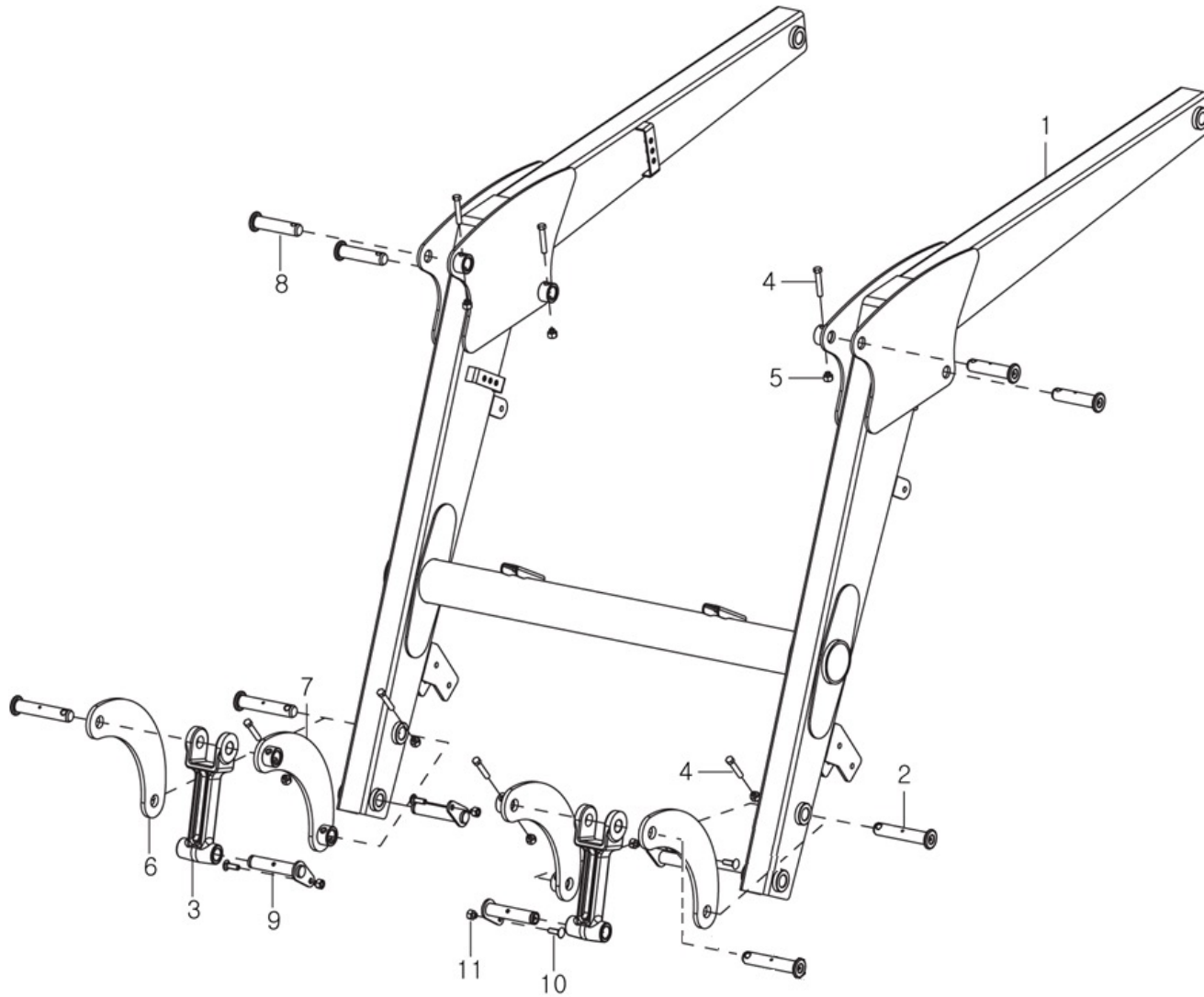
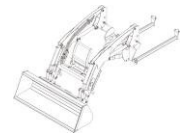


FIG 005

TX47

POST ASSEMBLY

P1

Year / Month

2019 / 04

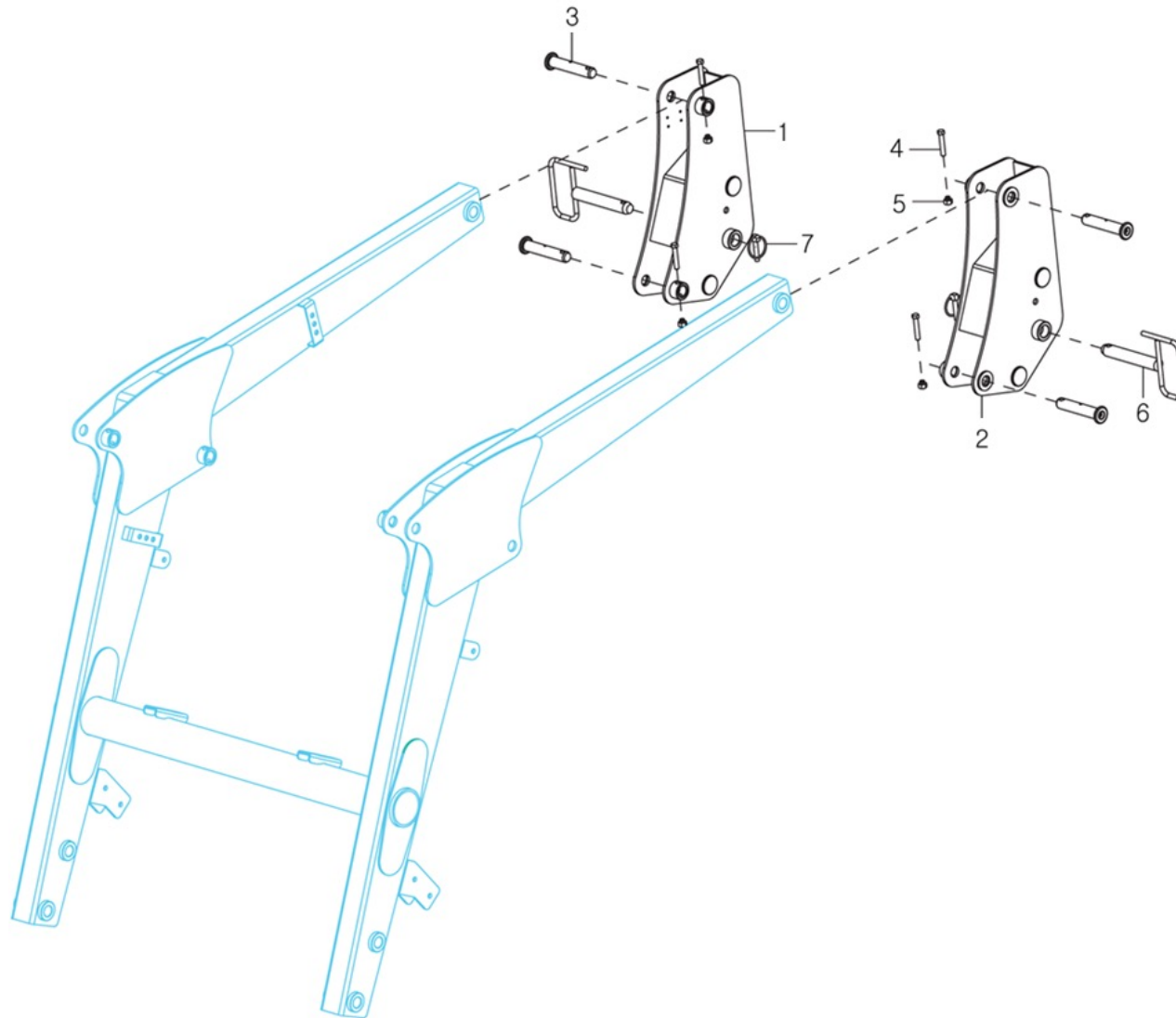


FIG 006

TX47

STAND & SAFETY BAR

P1

Year / Month

2019 / 04

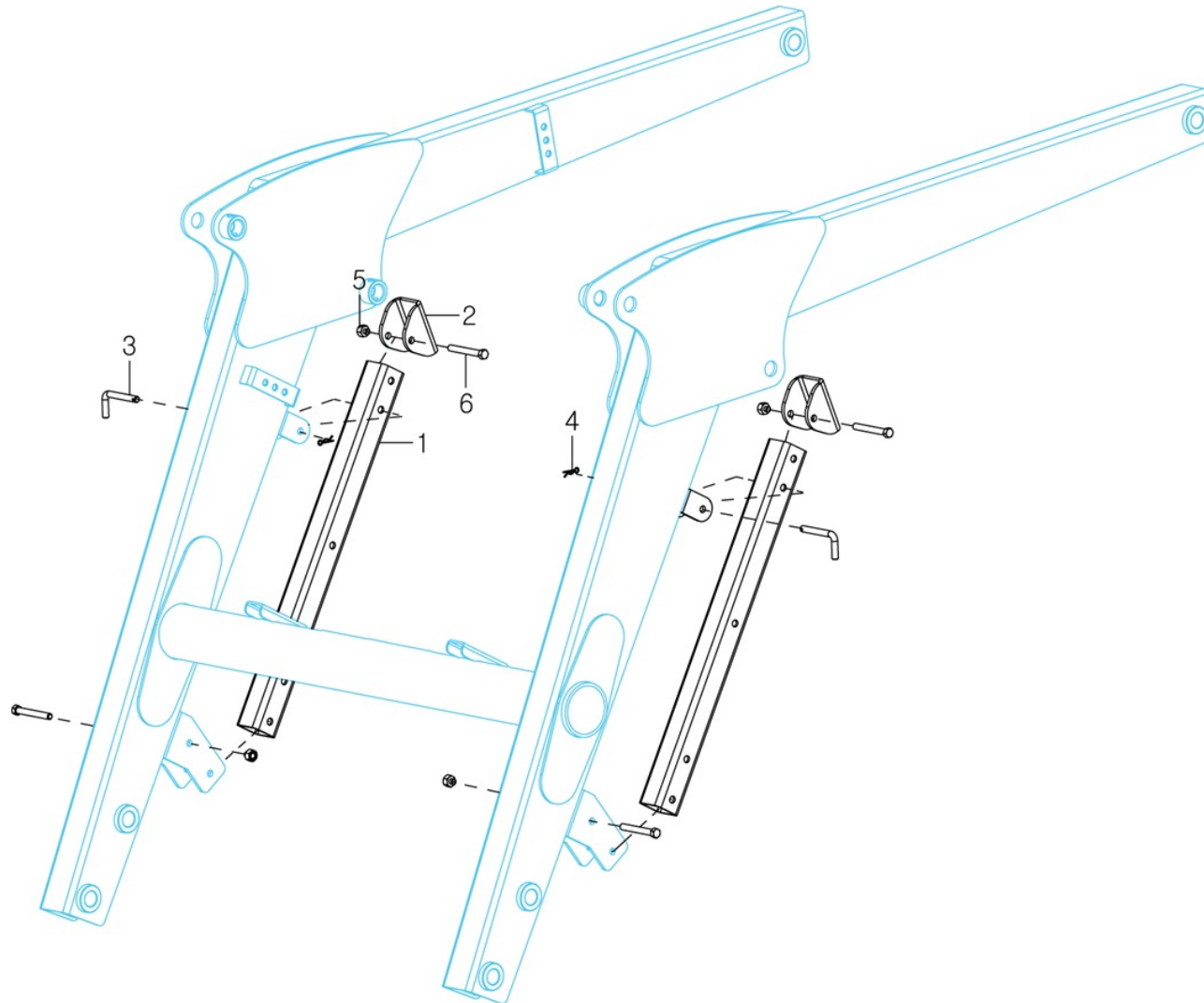
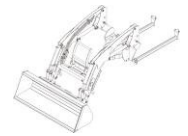


FIG 007

TX47

LOADER VALVE

P1

Year / Month

2019 / 04



Loader V/V

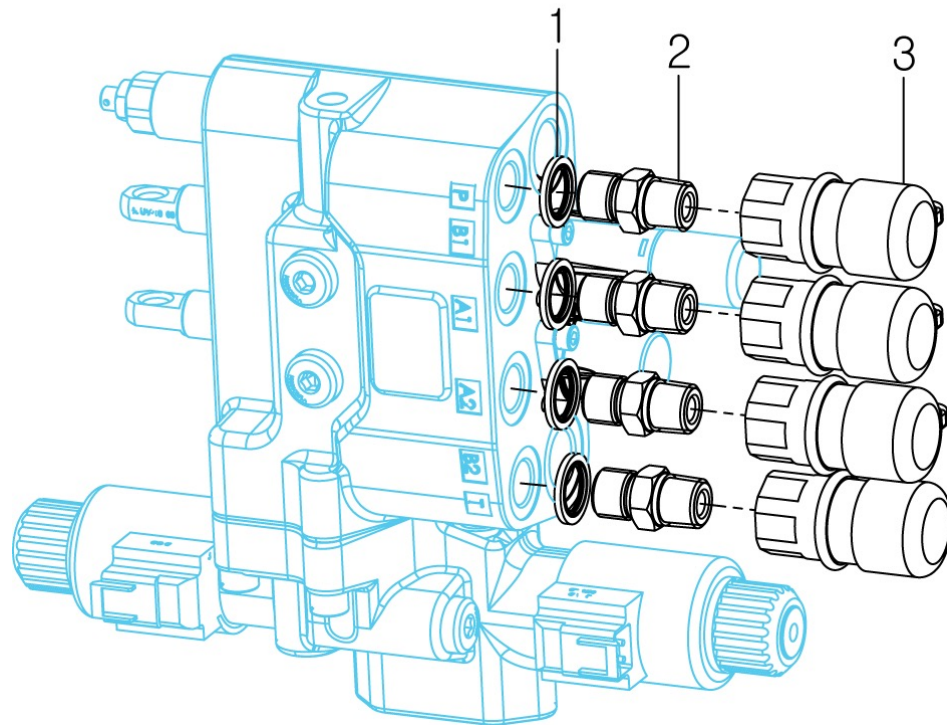


FIG 008

TX47

HYDRAULIC PIPING ASSEMBLY

P1

Year / Month

2019 / 04

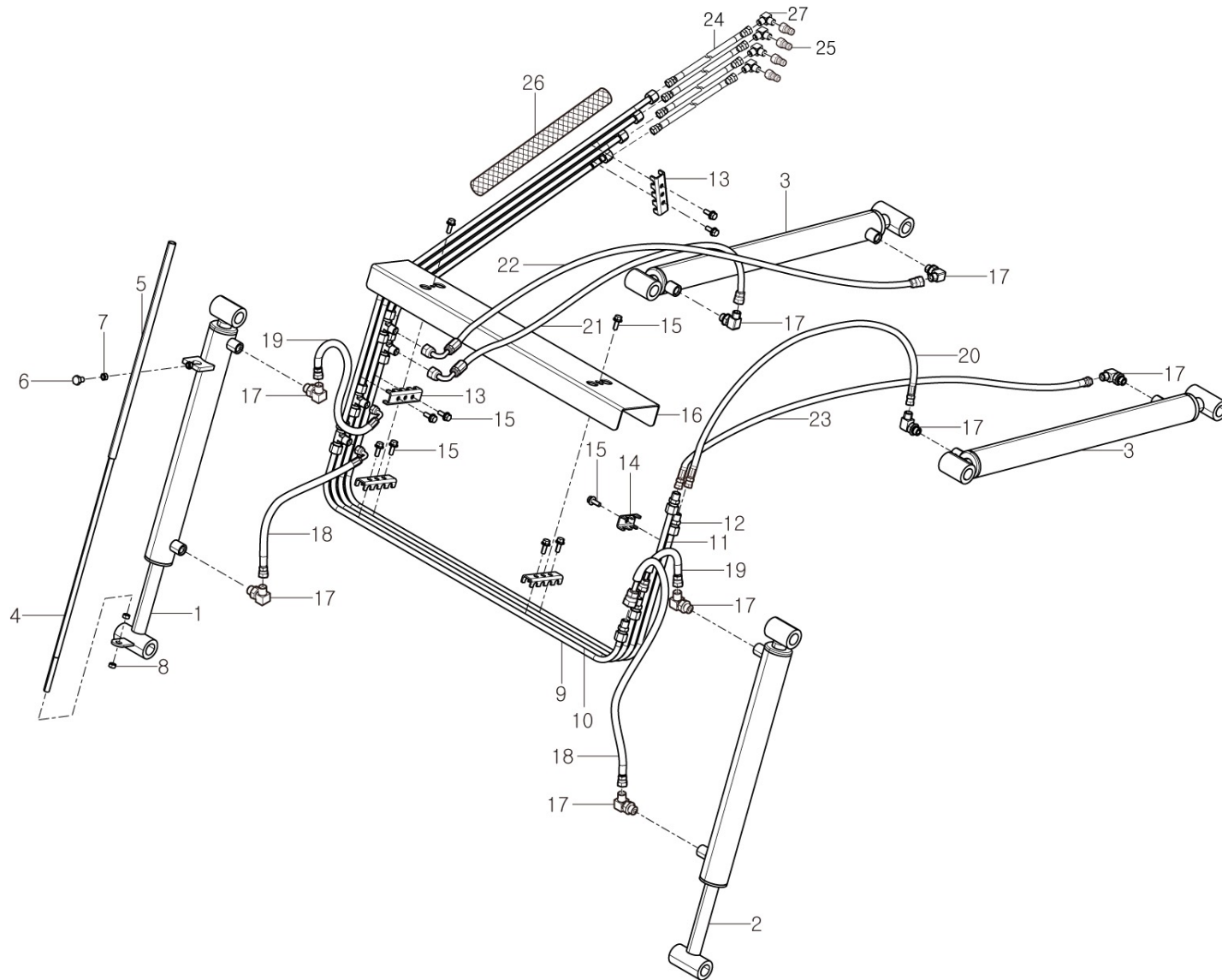
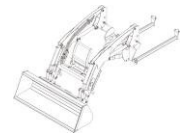


FIG 009

TX47

DECAL

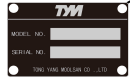
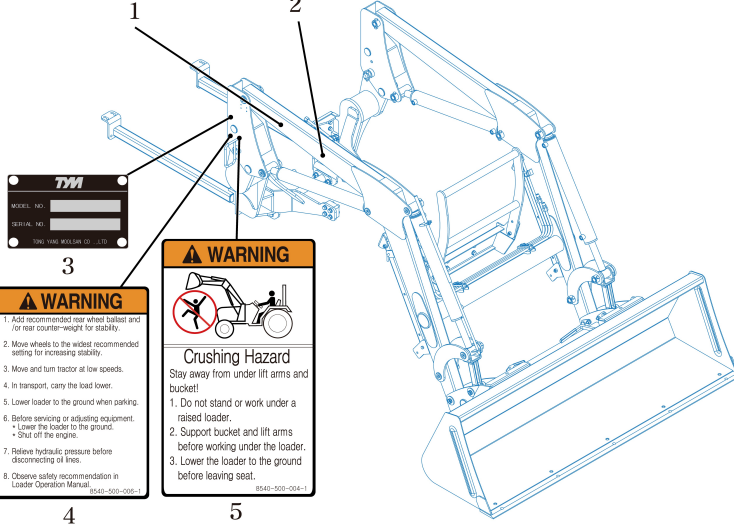
P1

Year / Month

2019 / 04



TVM TX47



3

WARNING

1. Add recommended rear wheel ballast and/or rear counter-weight for stability.
2. Move wheels to the widest recommended setting for increasing stability.
3. Move and turn tractor at low speeds.
4. In transport, carry the load lower.
5. Lower loader to the ground when parking.
6. Before servicing or adjusting equipment:
 - Lower the loader to the ground.
 - Shut off the engine.
7. Relieve hydraulic pressure before disconnecting of lines.
8. Observe safety recommendation in Loader Operation Manual.

8540-500-004-1

4

WARNING

Crushing Hazard
Stay away from under lift arms and bucket!

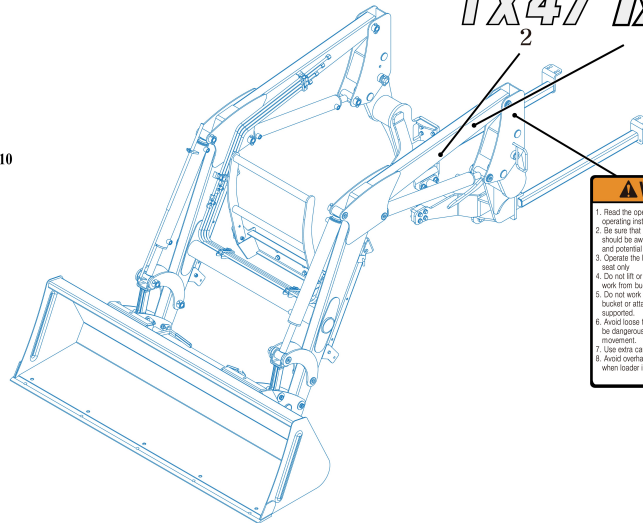
1. Do not stand or work under a raised loader.
2. Support bucket and lift arms before working under the loader.
3. Lower the loader to the ground before leaving seat.

8540-500-004-1

5

TX47 TVM

TX47-010



WARNING

1. Read the operator's manual for complete operating instructions and safety.
2. Be sure that anyone operating the loader should be aware of safe operating practices and potential hazard.
3. Operate the loader from the operator's seat only.
4. Do not lift or carry anyone on the loader or work from bucket or attachment.
5. Do not work under the raised loader, bucket or attachment if it is not securely supported.
6. Avoid loose fill, rocks and holes; these can be dangerous for loader operation or movement.
7. Use extra caution when working on steep hills.
8. Avoid overhead power lines or obstacles when loader is raised.

8540-500-005-1

6

WARNING

NEVER USE FRONT END LOADER FOR TOWING OPERATIONS.

8540-500-005-1

7

DANGER

INSTALL SAFETY PROP BEFORE WORKING UNDER RAISED STRUCTURE

8540-500-005-1

8

