

2023 Catalog

Series 5

Utility Tractors

111 - 117 ps



For distribution and sales in the South Korean market only

Series 5 Utility Tractors

While combining greater power output and maximized lift capabilities, the Series 5 TYM tractors also balance high maneuverability while increasing ground coverage with each pass.

Faster traveling speeds make these tractors ideal for medium-to-heavy-duty applications that demand productivity.



K110E

Engine power 111 ps - Lift capacity 4170 kg



K120

Engine power 117 ps - Lift capacity 4642 kg



T115

Engine power 113 ps - Lift capacity 2417 kg

Upgraded capabilities and enhanced productivity to tackle your challenges

The Series 5 tractors include premium TYM utility models, designed with optimum dimensions for maximum maneuverability. Additionally, these tractors that have a less than 10% drop-off in power from the front to back, powered by a high efficiency, liquid-cooled engine certified for Tier 4 standards. Combined with a large volume fuel tank, this tractor is ready to take on any time-intensive, medium-to-heavy duty applications.

To enable further productivity during running, the tractor is fitted with a premium operator cabin, complete with full AC and heating and an intuitive console comprising all major controls.

Most popular applications



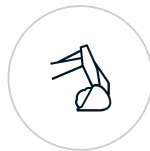
Livestock & Poultry



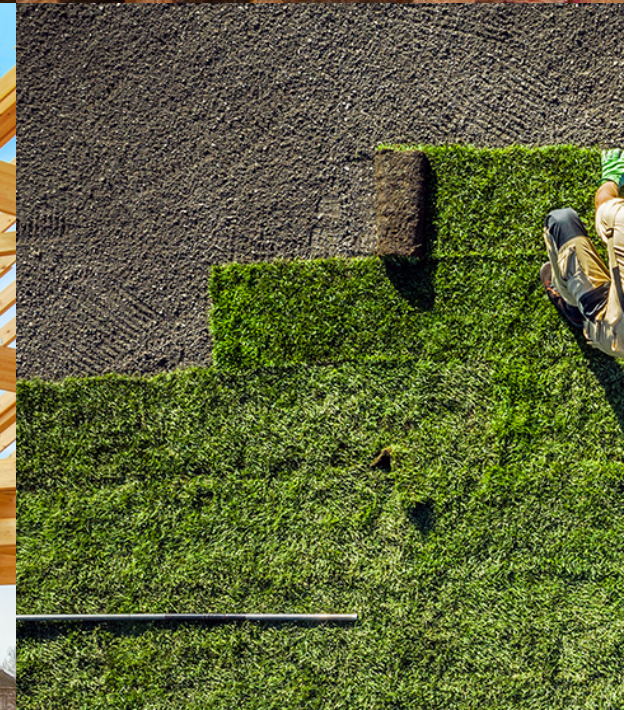
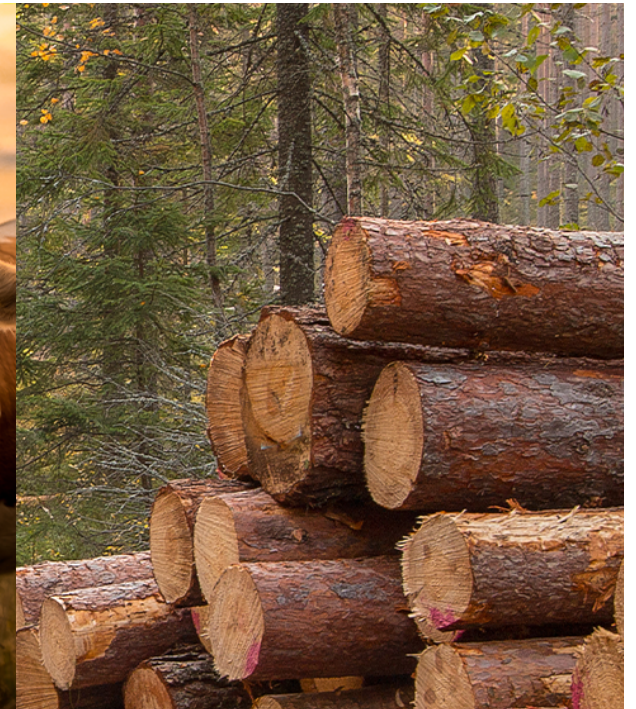
Land Clearing & Forestry



Material Handling



Landscaping



All the right features to get the job done



4-cylinder, Tier 4 Doosan diesel engine

With high power output and low-end torque, this engine maintains the highest level of performance with enhanced efficiency. The advanced fuel injection system and turbo charger, the engine drives tractor productivity in challenging conditions and applications.



Interior detailing to promote operator comfort

Operators can activate core functions easily from the main console, including the PTO on/off switch. Digital displays provide alerts and diagnostic information instantly and at a glance. In addition to a spacious and ergonomic seat, the operator platform has a flat floor with a rubber mat to support comfort during entry, exit and while driving.



Durable, shock absorbing axle configuration

The heavy duty 4WD front axle allows the tractor to lift heavy loads and tow large implements while absorbing shock and maintaining tractor stability. Powerful hydraulics support the power steering system, which benefits from a dual action mechanism using a hydraulic cylinder and tandem type hydraulic pump.



Hydraulic implement controls

Hydraulic implement controls allow easy removal of the attachments from the outside of the cabin.



3-point hitch with powerful lift capacity

The 3-point linkage on the rear has an impressive lift capacity that reaches the end ball joint. The rear PTO control can be used to adjust rpm based on the task, increasing it for more intensive applications like slashing and digging.



6-port rear hydraulic valve for add-on functions

The 6-port valve on the rear of the tractor allows implements of different functions to be controlled easily. This is particularly beneficial for applications like row crop farming and material handling, as trailers are fit with an optional hydraulic brake.

K110E

Best-selling utility tractor



Key specifications:

Engine power
111 ps -

Engine manufacturer
Doosan DM03VA

Lift capacity
4170 kg

PTO power
101.9 ps -



1. Power shuttle



2. De-clutch



3. Dual side mirrors



4. Electronic lift control



5. Loader joystick



6. Beverage cooler / warmer

K120

Smart high performance



Key specifications:

Engine power
117 ps -

Engine manufacturer
JohnDeere 4045HL292

Lift capacity
4642 kg

PTO power
103.3 ps -



1. Power shuttle



2. De-clutch



3. Dual side mirrors



4. Electronic lift control



5. Loader joystick



6. Beverage cooler / warmer

T115

The in-series, top-of-the-line model



1. Dual side mirrors



2. Powershift transmission



3. Digital instrument panel



4. Battery shut-off switch



5. LED interior lighting



6. Side & rear LED work lights

Key specifications:

Engine power
113 ps -

Engine manufacturer
Deutz TCD 3.6 L4

Lift capacity
2417 kg

PTO power
109 ps -

Specification Guide

MODEL	K110E	K120	T115
ENGINE			
Engine manufacturer	Doosan DM03VA	JohnDeere 4045HL292	Deutz TCD 3.6 L4
Type	Turbocharger	Turbocharger	Turbo charger
Engine power	111 ps 82 kW	117 ps 86 kW	113 ps 83 kW
PTO power	101.9 ps 75 kW	103.3 ps 76 kW	109 ps 80 kW
Rated engine speed	2200 rpm	2400 rpm	2200 rpm
No. of cylinders	4	4	4
Displacement	3409 cc 208.02 cu. in.	4525 cc 276.1 cu. in.	3621 cc 221 cu. in.
Air cleaner	Dry element	Dry element	Dual dry
Alternator	12V-110A	12V-110A	12V, 120A
Fuel system	Direct Injection	Direct Injection	CRDI
POWERTRAIN			
Transmission type	Power Shuttle	Power Shuttle	Power-shuttle
No. of speeds	F12 x R12	F16 x R16	F32 x R32
Max. traveling speed	35.28 km/h 21.92 mph	33.18 km/h 20.61 mph	37 km/h 23 mph
Brakes	Wet Disc	Wet Disc	Wet, Multi-disc
Steering	Hydrostatic	Hydrostatic	Hydrostatic
Clutch	Wet Disc	Wet Disc	Wet, multi-plate
CAPACITIES			
Fuel tank	160 L 42.2 gal	160 L 42.26 gal	120 L 31.7 gal
Coolant	15.9 L 16.8 qt	15.9 L 16.8 qt	16.5 L 4.4 gal
Crankcase	14 L 14.7 qt	13 L 13.7 qt	15.9 L 4.2 gal
Transmission/Hydraulics system	56 L 14.7 gal	56 L 14.7 gal	75 L 19.8 gal
Front axle	12 L 12.6 qt	12 L 12.6 qt	17.5 L 4.6 gal
PTO			
PTO type	Independent	Independent	Independent
PTO control	Electric/Hydro	Electric/Hydro	Electric/Hydro
PTO rear	540/750/1000 rpm	540/750/1000 rpm	540/750/1000
HYDRAULIC SYSTEM			
Pump type	Gear Pump	Gear Pump	Gear pump
Implement flow	61.6 lpm 16.2 gpm	69.6 lpm 18.3 gpm	53.7 lpm 14.2 gpm
Steering flow	30.8 lpm 8.1 gpm	33.6 lpm 8.8 gpm	26.8 lpm 7.1 gpm
Total flow	92.4 lpm 24.4 gpm	103.2 lpm 27.2 gpm	80.5 lpm 21.3 gpm
Category, 3-point hitch	Cat 2	Cat 2	Cat2
Hitch lift capacity	4170 kg	4642 kg	2417 kg
Hitch lift capacity at 24 inches behind link ends	2744 kg 6049.48 lb	3339 kg 7361.23 lb	3458 kg 7623.6 lb
Lift control type	Position/Draft/TBS	Position/Draft/TBS	Position/Draft
No. of standard remote valves	6	6	6
DIMENSIONS & WEIGHTS			
Overall length with 3-point hitch	4070 mm 160.2 in.	4020 mm 158.2 in.	4450 mm 175.2 in.
Overall width	2220 mm 87.4 in.	2270 mm 89.3 in.	2270 mm 89.4 in.
Wheelbase	2360 mm 92.9 in.	2360 mm 92.9 in.	2380 mm 93.7 in.
Height to top of ROPS	2955 mm 116.3 in.	2790 mm 109.8 in.	2850 mm 112.2 in.
Min. ground clearance	460 mm 18.1 in.	445 mm 17.5 in.	425 mm 16.7 in.
Min. turn radius with brakes	4170 mm 164.1 in.	4220 mm 166.1 in.	3650 mm 143.7 in.
Min. turn radius without brakes	5440 mm 214.1 in.	5480 mm 215.7 in.	4120 mm 162.2 in.
Track width	☒F: 1540 mm / R: 1670 mm	F: 1525 mm / R: 1655 mm	F: 1720 mm / R: 1650 mm
Weight with cab	4135 kg 9116.1 lb	4080 kg 8994.9 lb	4055 kg 8940 lb
STANDARD TIRES			
Agricultural - Front	13.6 - 24	13.6 - 24	13.6 - 24
Agricultural - Rear	18.4 - 34	18.4 - 34	18.4 - 34



Designed for your world

TYM creates tractors that bring together alluring form, advanced function and accessible value. Through Korean expertise in design, engineering and manufacturing, the company helps owners overcome every obstacle as they shape the world around them.

Headquartered in Korea with distribution across North America, Europe, and Asia, and assembly operations in the USA, TYM has been empowering customers for over 70 years.

www.tym.world